

INSTRUMENT APPROACH CHART
AERODROME ELEV 2606'
 HEIGHTS RELATED TO AERODROME - ELEV 2606'

TIBA: 124.8

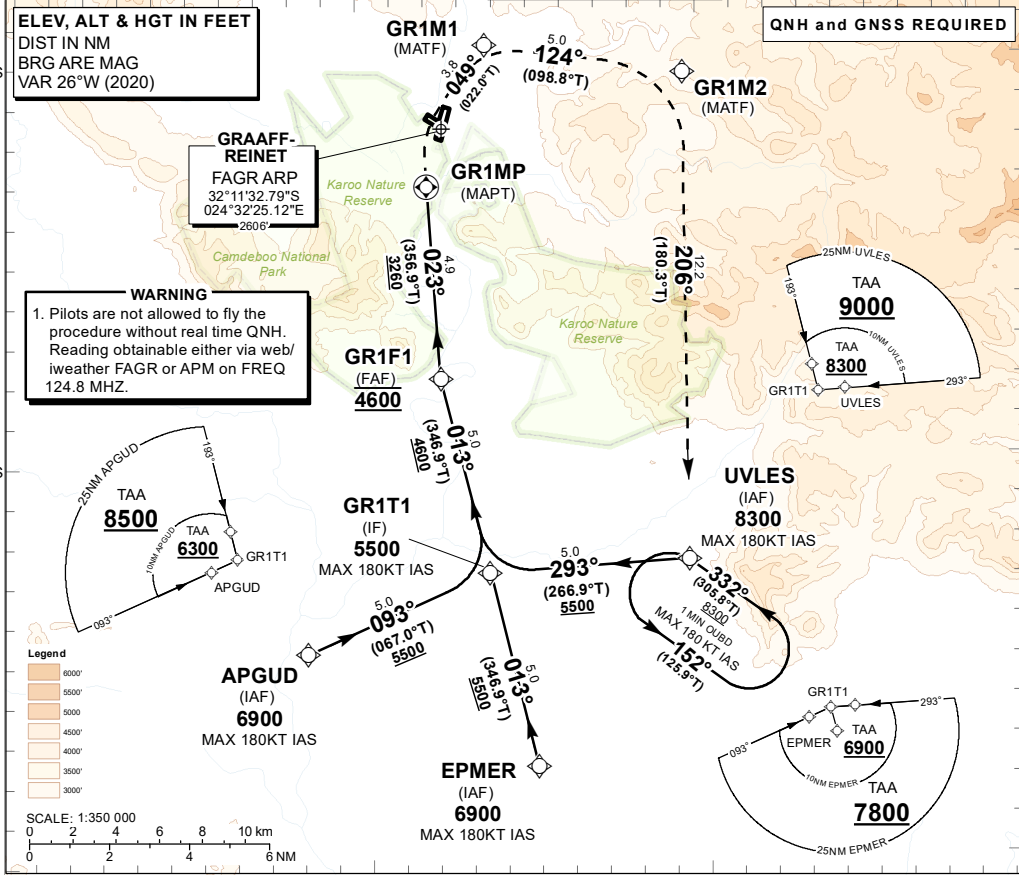
GRAAFF REINET
RNAV (GNSS) RWY 04
 CAT A - B

ELEV, ALT & HGT IN FEET
 DIST IN NM
 BRG ARE MAG
 VAR 26°W (2020)

QNH and GNSS REQUIRED

GRAAFF-REINET
 FAGR ARP
 32°11'32.79"S
 024°32'25.12"E
 2606'

WARNING
 1. Pilots are not allowed to fly the procedure without real time QNH. Reading obtainable either via web/ weather FAGR or APM on FREQ 124.8 MHZ.



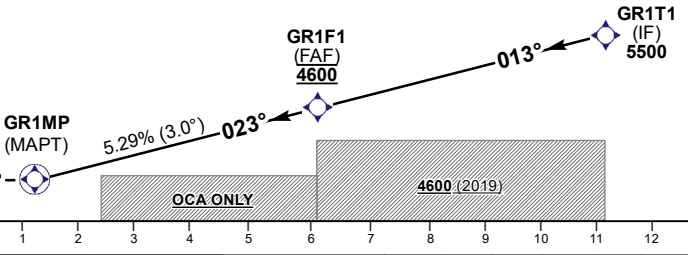
	24°20'E	24°30'E	24°40'E						
DIST (NM) to MAPT	6.04	6	5	4	3	2	1		
ADVISORY ALT (HGT)	4600 (1994)	4590 (1984)	4270 (1664)	3950 (1344)	3630 (1024)	3300 (694)	2980 (374)		

TRANSITION ALT 9000
TRANSITION LEVEL ATC

MISSED APPROACH:
 Climb to 8300FT ALT. Turn right direct to GR1M1 then to GR1M2. At GR1M2 turn right direct UVLES and enter hold at 8300FT ALT.

TCH 50

THR ELEV 2581
 NM to/from **THR RWY 04**
 MIN TEMP: 0°C



CHANGE: NEW Procedure

Offset/Approach	OCA(H)		A	B	GS	KT	80	100	120	140	160
	LNAV	FAGR QNH									
Circling		2.5% Missed APCH Gradient	4300 (1694)	4350 (1744)	FAF to MAPT	M:S	4:32	3:37	3:01	2:35	2:16
		3.5% Missed APCH Gradient	3850 (1244)	3860 (1254)							
		4.5% Missed APCH Gradient	3500 (894)	3550 (944)							
		5.5% Missed APCH Gradient	3350 (744)	3420 (814)							
		6.5% Missed APCH Gradient	3220 (614)	3300 (694)							
			3030 (424)	4210 (1604)							